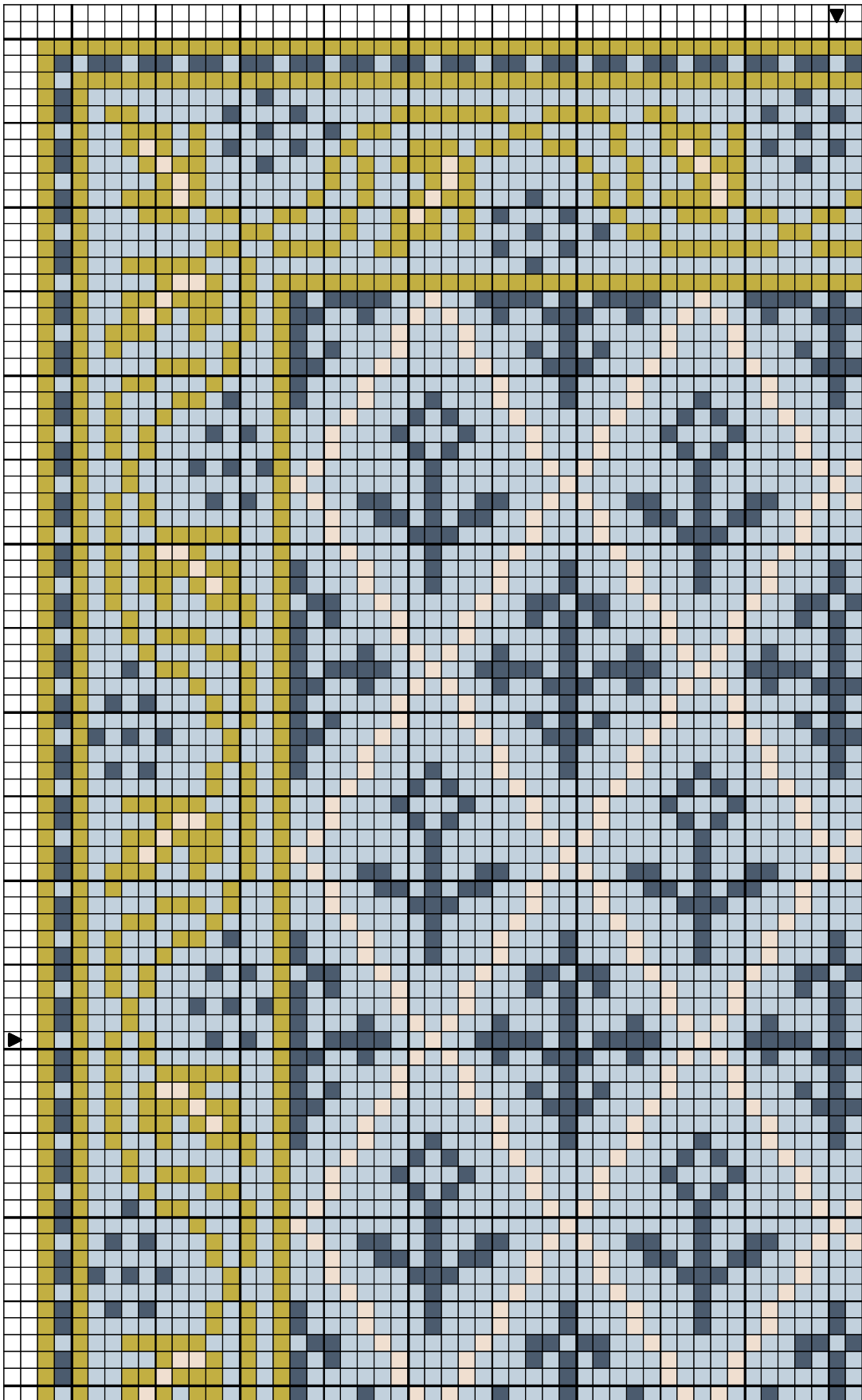


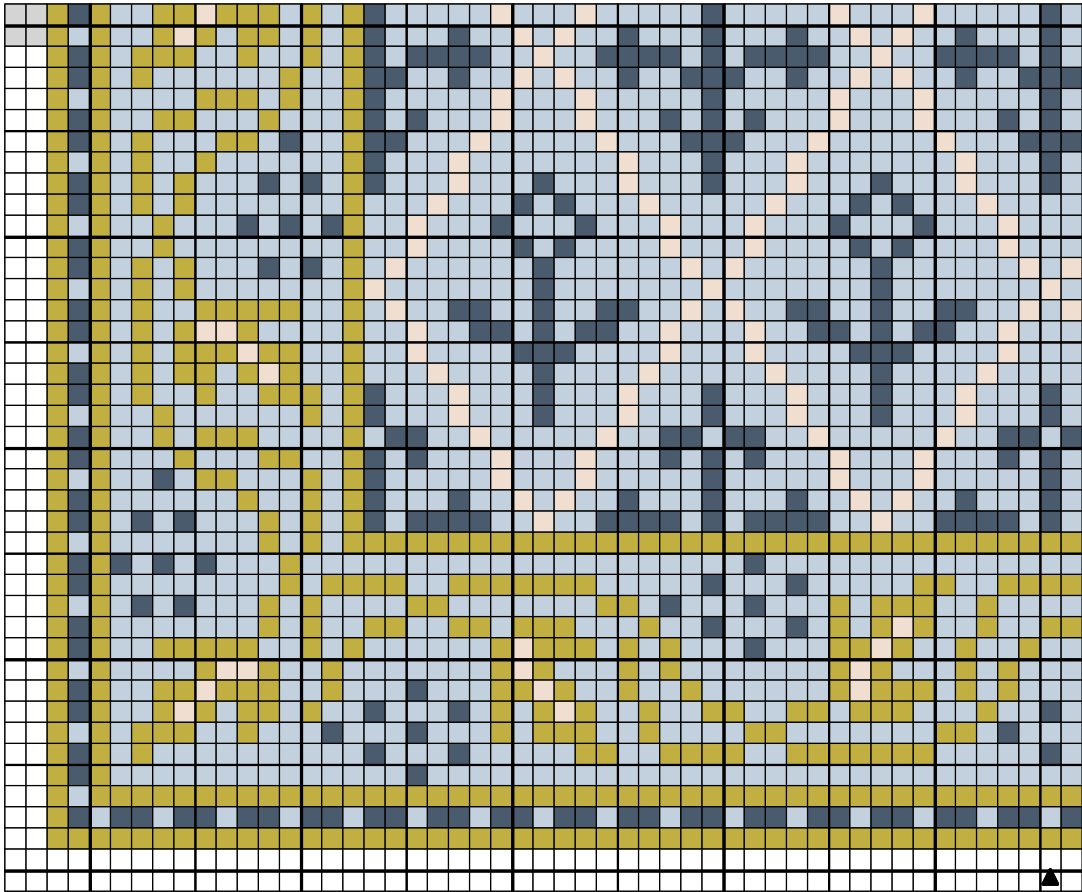
1:48 scale Arts & Crafts carpet, circa 1900



Copyright © Anna-Carin Betzén



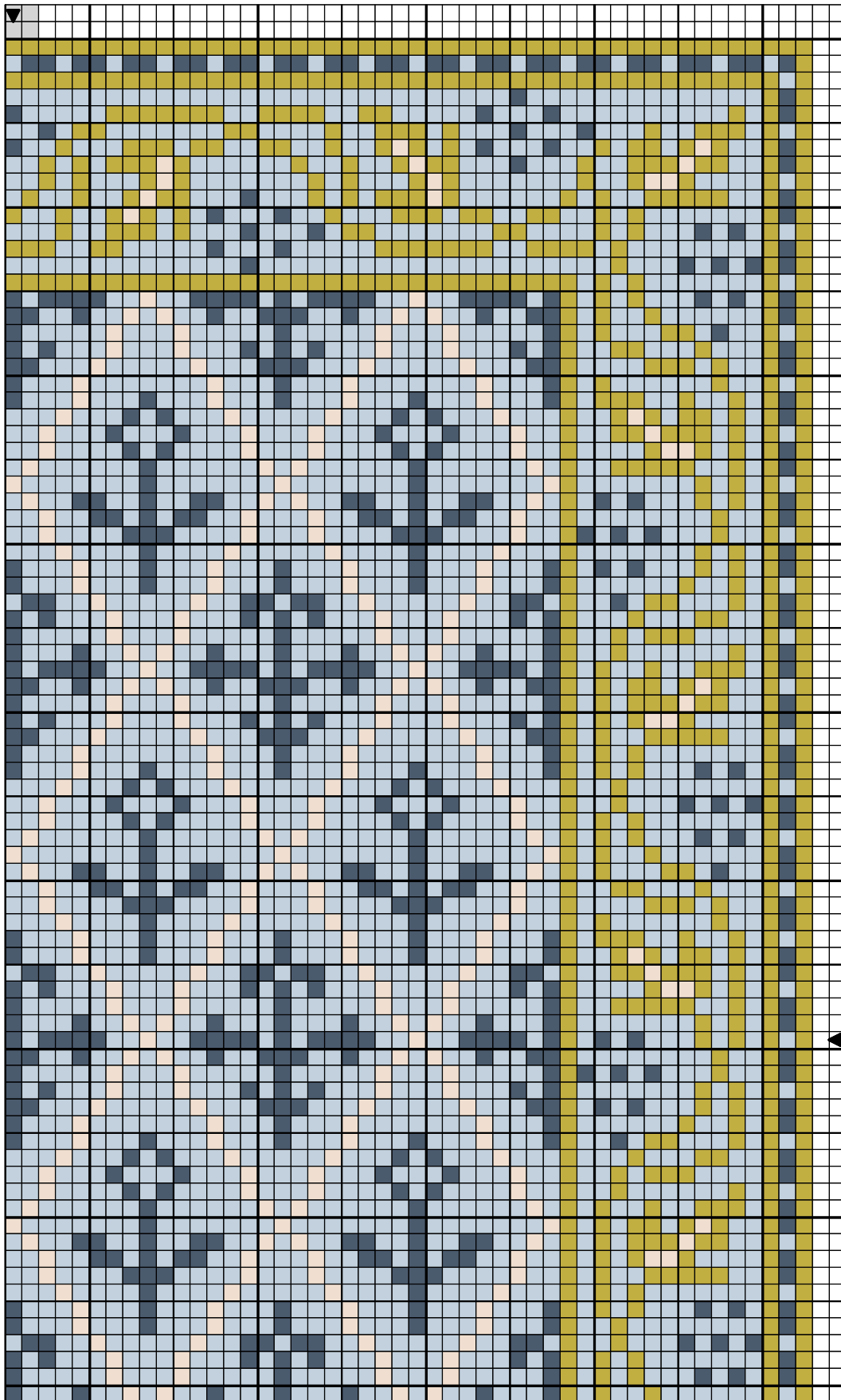
1:48 scale Arts & Crafts carpet, circa 1900



Copyright © Anna-Carin Betzén



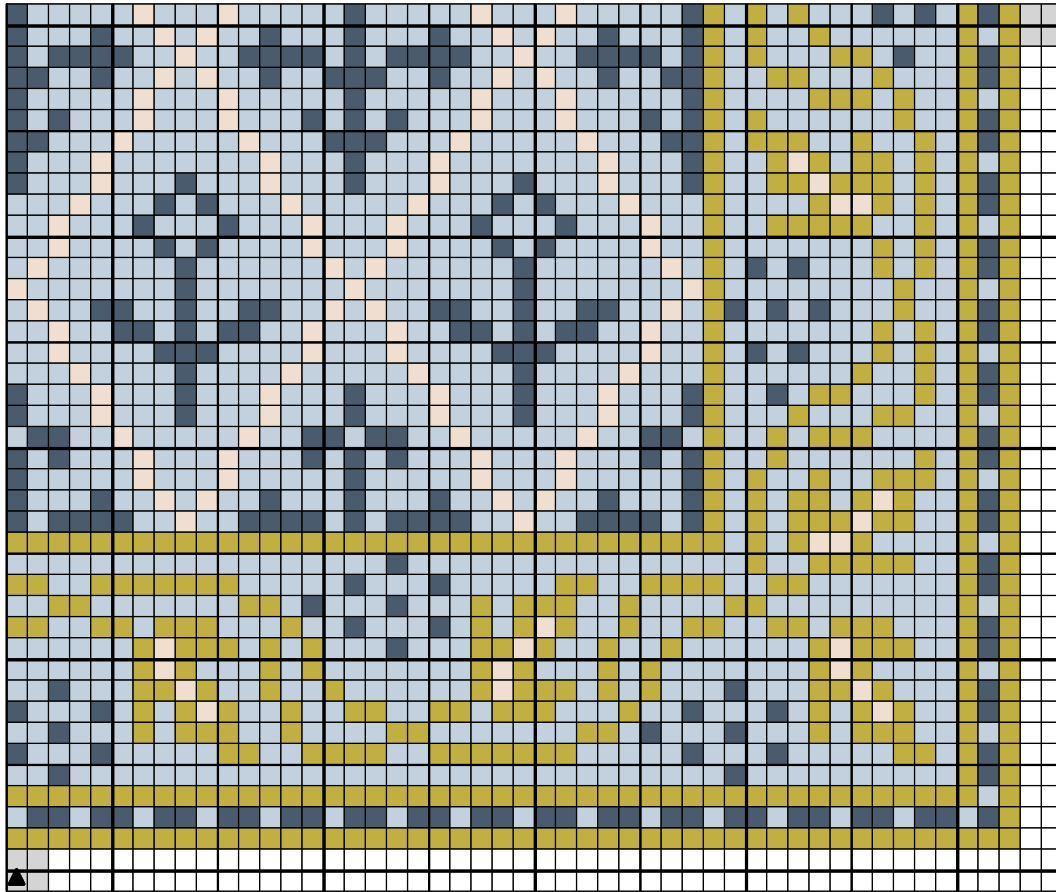
1:48 scale Arts & Crafts carpet, circa 1900



Copyright © Anna-Carin Betzén





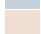

1:48 scale Arts & Crafts carpet, circa 1900



Copyright © Anna-Carin Betzén



1:48 scale Arts & Crafts carpet, circa 1900

	Slate grey	DMC 930
	Sky blue	DMC 800
	Ecru	DMC Ecru
	Golden green	DMC 733

Stitch Count 95 x 119

Design Area 4 3/8 x 5 3/8 inches at 22ct

3 x 3 3/4 inches at 32ct

2 3/8 x 3 inches at 40ct

2 x 2 1/2 inches at 48ct

1 3/4 x 2 1/8 inches at 56ct

Note: I based this design on a large carpet by C.F.A.Voysey. The original carpet was a full 3 m (10 ft) long, so 48 count gauze is just right for 1:48 scale.

Please note: For the grapes I used 2 strands of floss to make them appear fuller, the rest is stitched with a single strand.

Cut an embroidery frame from sturdy card, with an aperture at least 1.5 cm (5/8") larger than the finished size of the rug. Cut gauze at least 1.2 cm (1/2") larger than the hole in the frame. Glue gauze to frame with Tacky Glue or similar.

When finished, add a fringe if you like; the original rug had a light colored fringe. You'll find fringing instructions on my website.

Finally, apply Tacky Glue or similar to the last few rows of stitching on the back of the rug, around all edges. Work it in a little with a small, firm, paintbrush, and make sure that it covers the stitches closest to the edges too.

When dry, peel the gauze from the frame (I use to save the frames and reuse). Using sharp scissors, trim the fringed ends to a suitable length and cut along the very edges of the stitching on the other sides.

Design By: Anna-Carin Betzén, [www.btz.se/minis](http://www.btz.se/minis)

Copyright © By: Anna-Carin Betzén