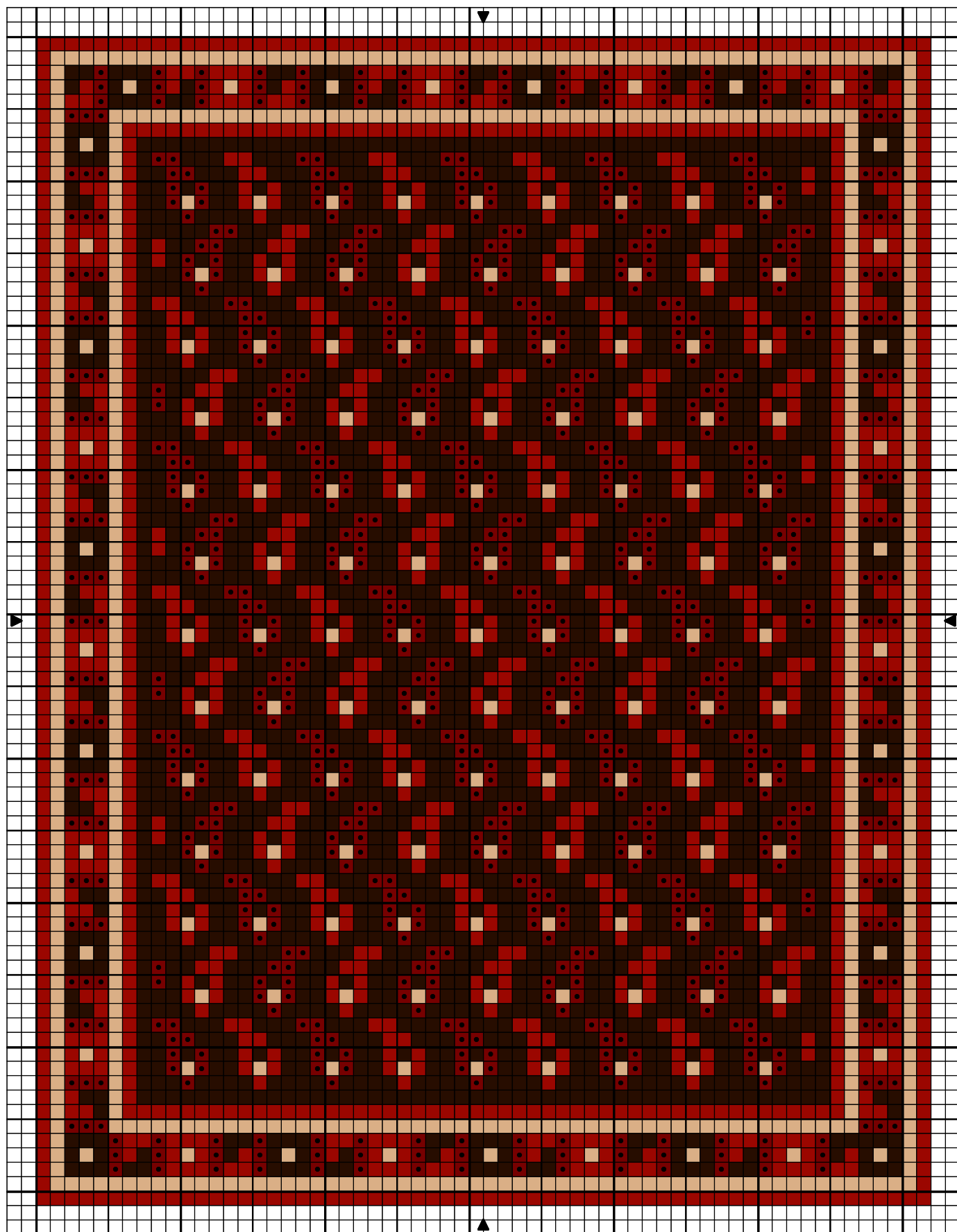






1:48 scale Baluch rug, early 1800s



1:48 scale Baluch rug, early 1800s

	DMC
 Mars red	221
 Egyptian red	347
 Camel	437
 Black, black brown, or navy	310, 3371 or 939

Stitch Count 62 x 81

Design Area 2 7/8 x 3 5/8 inches at 22ct

2 x 2 1/2 inches at 32ct

1 1/2 x 2 inches at 40ct

1 1/4 x 1 3/4 inches at 48ct

1 1/8 x 1 1/2 inches at 54ct

Note: Cut an embroidery frame from sturdy card, with an aperture at least 2 cm (3/4") larger than the finished size of the rug. Cut gauze at least 1.2 cm (1/2") larger than the hole in the frame. Glue gauze to frame with Tacky Glue or similar.

After completing the needlepoint, add a fringe if you like. You'll find fringing instructions on my website.

Finally, apply Tacky Glue or similar to the last few rows of stitching on the back of the rug, around all edges. Work it in a little with a small, firm, paintbrush, and make sure that it covers the stitches closest to the edges too.

When dry, peel the gauze from the frame (I save the frames and reuse). Using sharp scissors, cut along the very edges of the stitching.

Design By: Anna-Carin Betzén after photos of an antique rug

Copyright © By: Anna-Carin Betzén, www.btz.se/minis