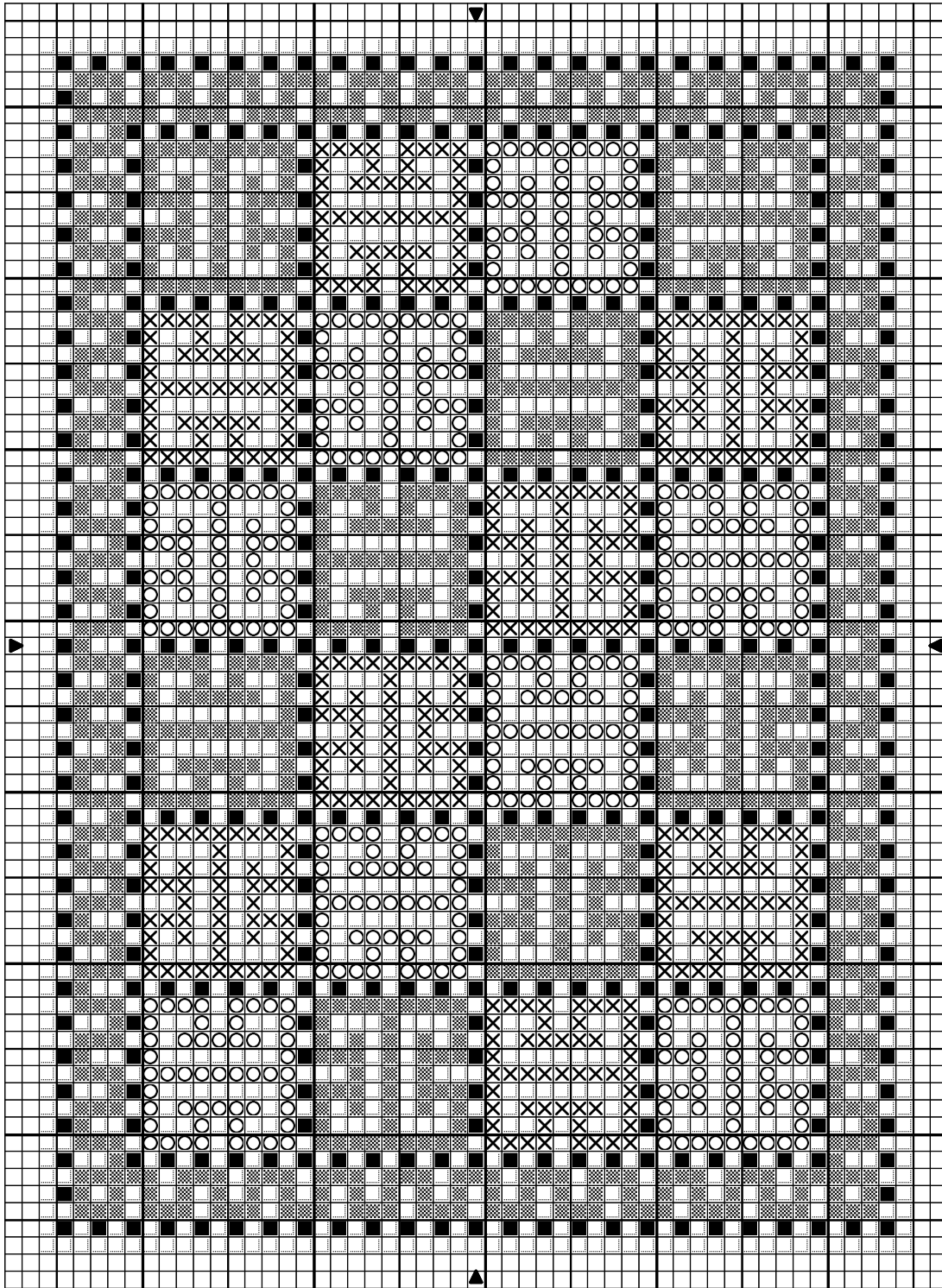




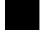


1:48 scale rug: Ursula, a Swedish design from 1935



1:48 scale rug: Ursula, a Swedish design from 1935

	DMC		
	Litchee mauve 3727		Fern green 320
	Maze yellow 3820		Pearl grey 762
	Pepper black 844		

Stitch Count 51 x 71

Design Area 2 3/8 x 3 1/4 inches at 22ct

1 5/8 x 2 1/4 inches at 32ct

1 1/4 x 1 3/4 inches at 40ct

1 1/8 x 1 1/2 inches at 48ct

1 x 1 3/8 inches at 54ct

Note: Based on "Ursula", a 1935 design by Swedish rug designer Märta Måås-Fjetterström. The original rug had fringed ends.

Cut an embroidery frame from sturdy card, with an aperture at least 2 cm (3/4") larger than the finished size of the rug. Cut gauze at least 1.2 cm (1/2") larger than the hole in the frame. Glue gauze to frame with Tacky Glue or similar.

I suggest you start by picking out the grid formed by the pepper black (#844) stitches. Then do the colors, and finally fill in the rest with pearl grey. PLEASE NOTE: There's one row of pearl grey stitching all around the rug, which doesn't show up very well in chart.

Stitch fringe if you like (my fringing instructions are found on the site).

Apply Tacky Glue or similar to the last few rows of stitching on the back of the rug, around all edges. Work it in a little with a small, firm, paintbrush, and make sure that it covers the stitches closest to the edges too.

When dry, peel the gauze from the frame (I save the frames and reuse). Using sharp scissors, cut the fringed ends to length (leaving gauze under the fringe - it won't show) and trimming the other edges along the very edges of the stitching.

Design By: Anna-Carin Betzén, www.btz.se/minis

Copyright © By: Anna-Carin Betzén