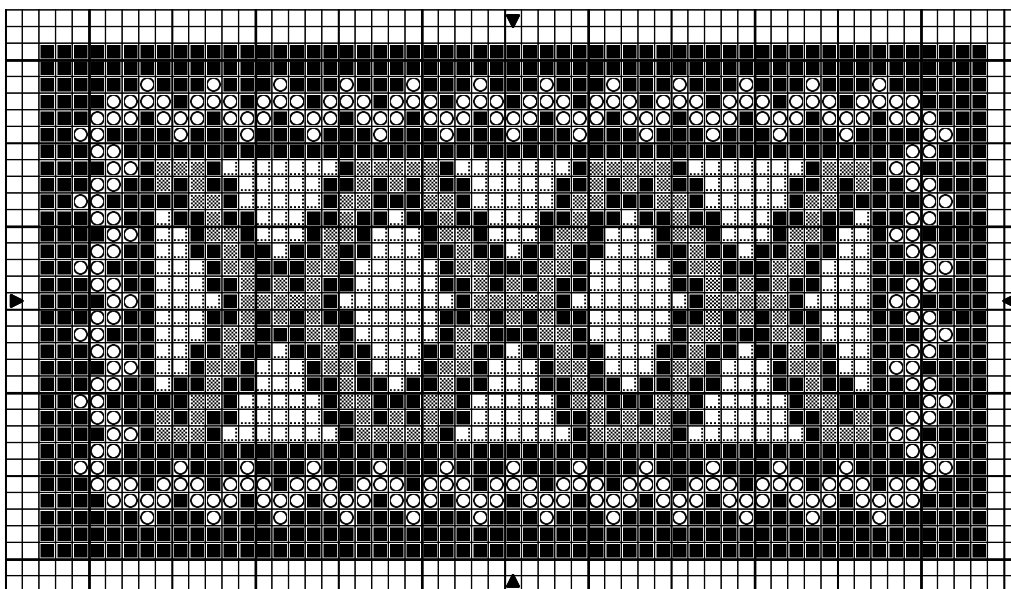


1:48 scale Stickley zigzag rug circa 1910



○	Terracotta	DMC 922
■	Flesh vy dk	DMC 3772
■	Black Brown	DMC 3371
⋯	Savannah gold	DMC 676

Stitch Count 57 x 31

Design Area 2 5/8 x 1 3/8 inches at 22ct

1 3/4 x 1 inches at 32ct

1 3/8 x 3/4 inches at 40ct

1 1/4 x 5/8 inches at 48ct

1 x 5/8 inches at 54ct

Note: Based on one of Gustav Stickley's full-scale druggert rugs; these were hard-wearing flatweave rugs with bold designs. It'll be 1:48 scale if stitched on 48 count gauze. Please note: the border miters differently depending on the number of repeats in the center.

Cut an embroidery frame from sturdy card, with an aperture at least 2 cm (3/4") larger than the finished size of the rug. Cut gauze at least 1.2 cm (1/2") larger than the hole in the frame. Glue gauze to frame with Tacky Glue or similar. After completing the needlepoint, add a fringe if you like. You'll find fringing instructions on my website. Finally, apply Tacky Glue or similar to the last few rows of stitching on the back of the rug, around all edges. Work it in a little with a small, firm, paintbrush, and make sure that it covers the stitches closest to the edges too. When dry, peel the gauze from the frame (I save my frames and reuse). Using sharp scissors, cut along the very edges of the stitching.

Design By: Anna-Carin Betzén, www.btz.se/minis

Copyright © By: Anna-Carin Betzén