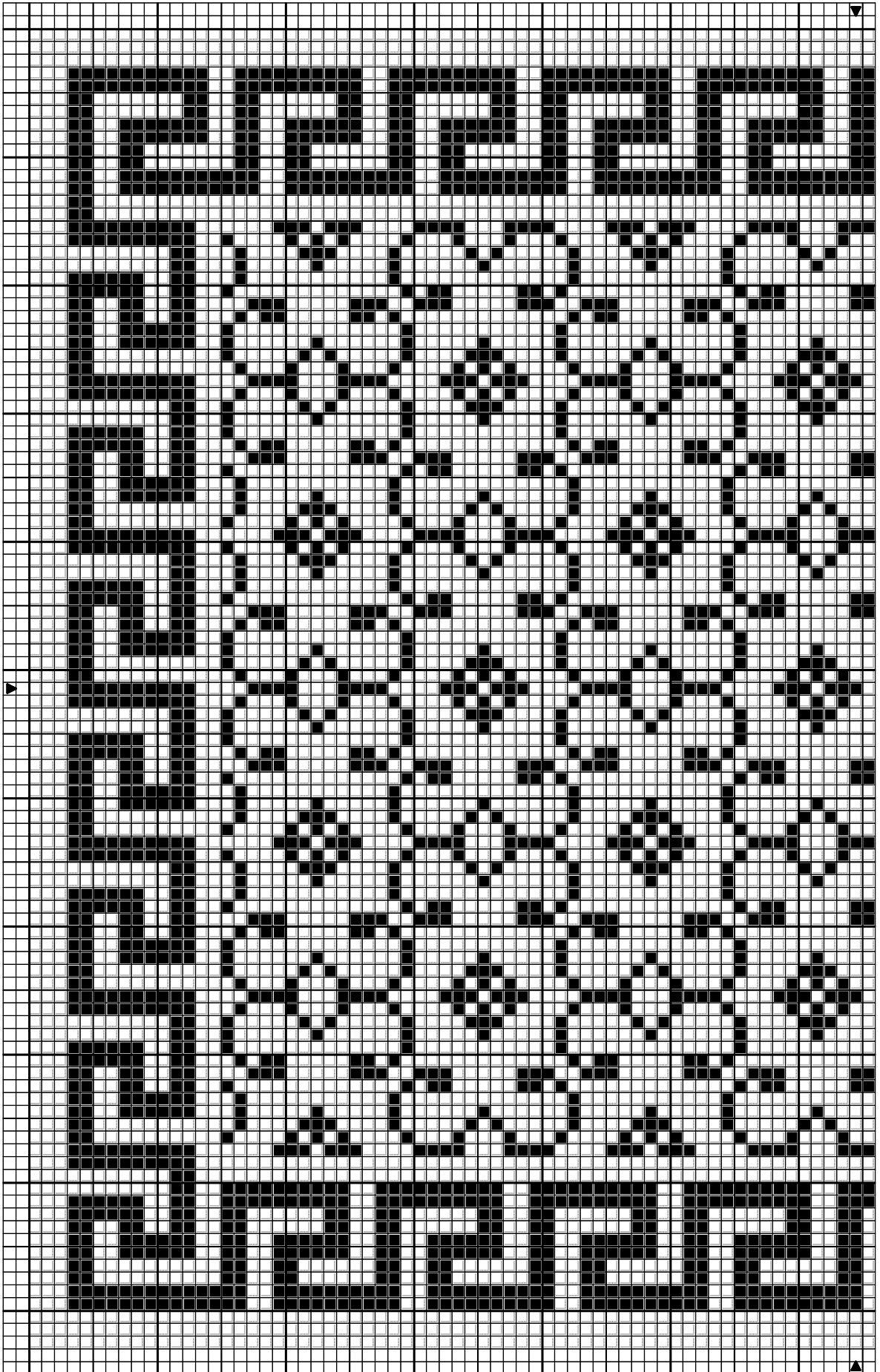
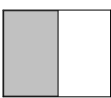


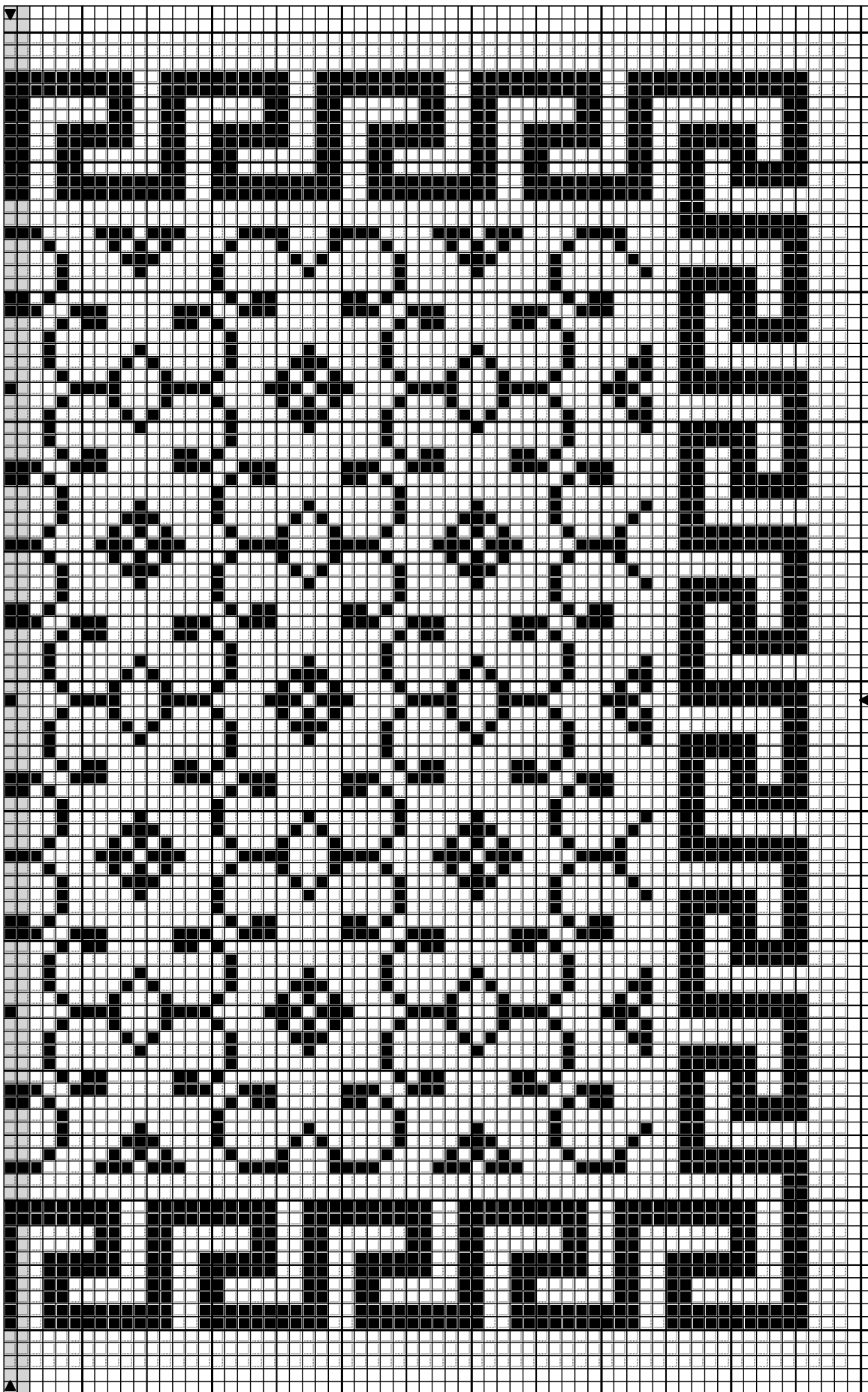
1:48 scale Stickley stylized floral rug circa 1910



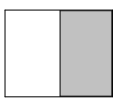
Copyright © Anna-Carin Betzén





1:48 scale Stickley stylized floral rug circa 1910



Copyright © Anna-Carin Betzén



1:48 scale Stickley stylized floral rug circa 1910

	Dark navy blue	DMC 939
	Turtledove grey	DMC 453

Stitch Count 129 x 103

Design Area 5 7/8 x 4 5/8 inches at 22ct

4 x 3 1/4 inches at 32ct

3 1/4 x 2 5/8 inches at 40ct

2 3/4 x 2 1/8 inches at 48ct

2 3/8 x 1 7/8 inches at 54ct

Note: Based on a full-scale rug. This design will be 1:48 scale if stitched on 48 count gauze. Gustav Stickley designed a number of drugget rugs; these were hard-wearing flatweave rugs with bold designs.

Note that there are three rows of background color all around the design.

Cut an embroidery frame from sturdy card, with an aperture at least 2 cm (3/4") larger than the finished size of the rug. Cut gauze at least 1.2 cm (1/2") larger than the hole in the frame. Glue gauze to frame with Tacky Glue or similar. After completing the needlepoint, add a fringe if you like. You'll find fringing instructions on my website. Finally, apply Tacky Glue or similar to the last few rows of stitching on the back of the rug, around all edges. Work it in a little with a small, firm, paintbrush, and make sure that it covers the stitches closest to the edges too. When dry, peel the gauze from the frame (I save the frames and reuse). Using sharp scissors, cut along the very edges of the stitching.

Design By: Anna-Carin Betzén, www.btz.se/minis

Copyright © By: Anna-Carin Betzén