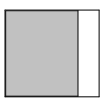
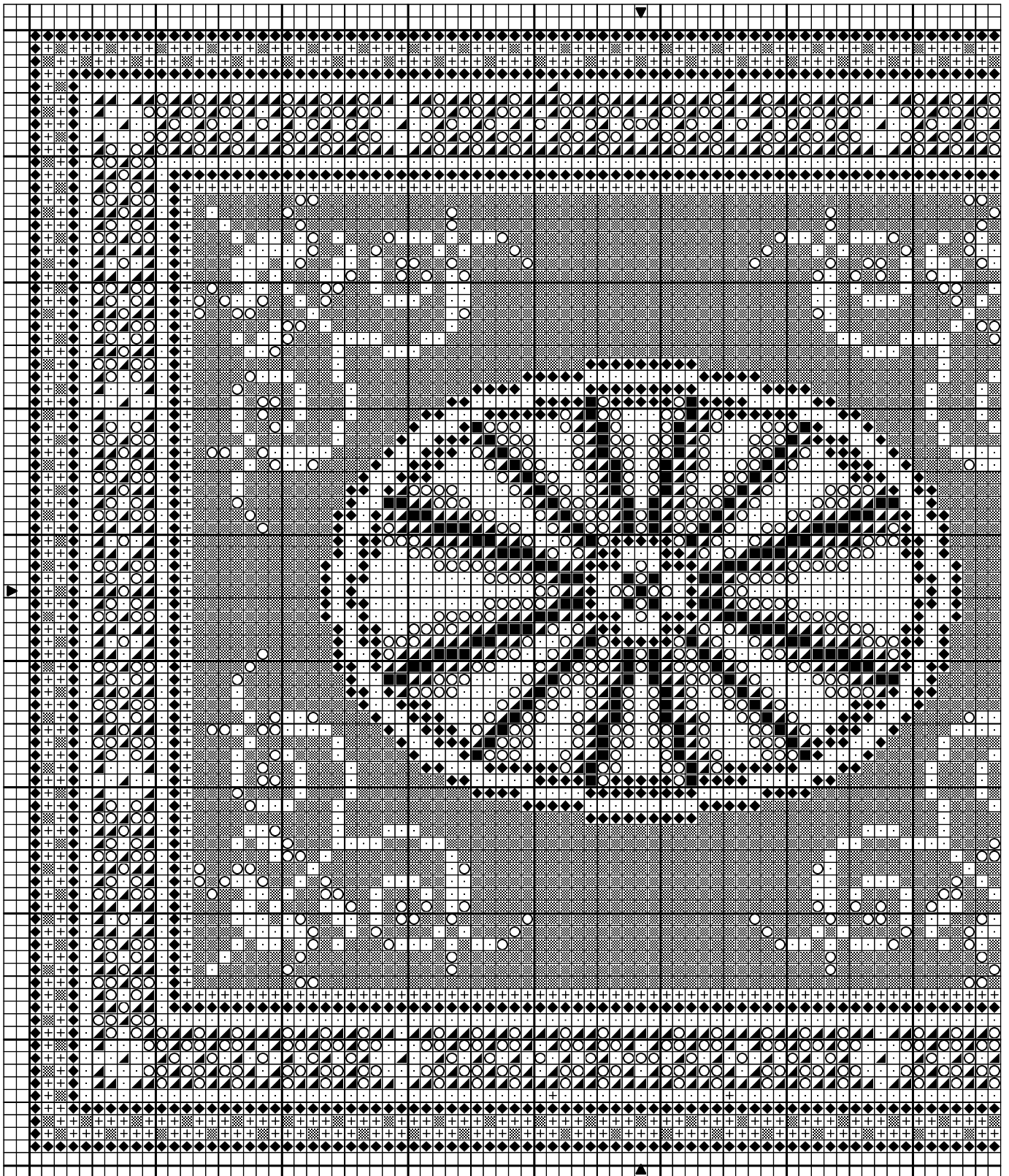
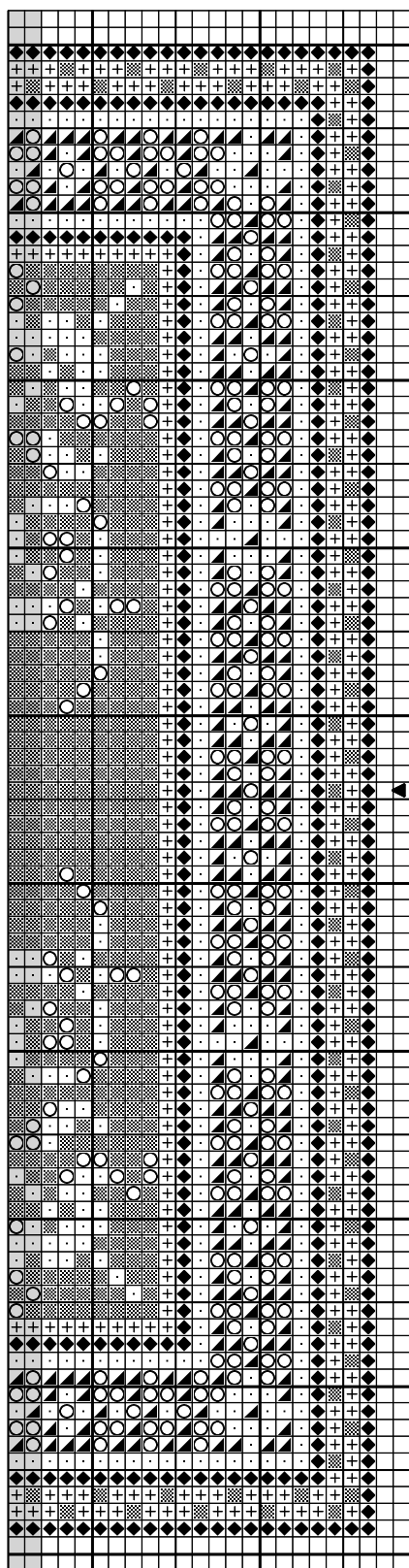


1:48 scale Neoclassical rug, 2nd half of the 18th century



Neoclassical rug, 2nd half of the 18th century



Copyright © Anna-Carin Betzén, www.btz.se/minis



1:48 scale Neoclassical rug, 2nd half of the 18th century

+	Light color
■	Medium color
◆	Dark color
.	Lighest cream
○	2nd lightest cream
◐	Medium cream
■	Dark cream

Stitch Count 97 x 89

Design Area 4 3/8 x 4 inches at 22ct
3 x 2 3/4 inches at 32ct
2 3/8 x 2 1/4 inches at 40ct
2 x 1 7/8 inches at 48ct
1 3/4 x 1 5/8 inches at 54ct

Note: An antique rug design, but my own Wedgwood-inspired color scheme.

Cut an embroidery frame from sturdy card, with an aperture at least 2 cm (3/4") larger than the finished size of the rug. Cut gauze at least 1.2 cm (1/2") larger than the hole in the frame. Glue gauze to frame with Tacky Glue or similar.

After completing the needlepoint, add a fringe if you like. You'll find fringing instructions on my website.

Finally, apply Tacky Glue or similar to the last few rows of stitching on the back of the rug, around all edges. Work it in a little with a small, firm, paintbrush, and make sure that it covers the stitches closest to the edges too.

When dry, peel the gauze from the frame (I save the frames and reuse). Using sharp scissors, cut along the very edges of the stitching.

Design By: Anna-Carin Betzén after an antique rug design

Copyright © By: Anna-Carin Betzén, www.btz.se/minis