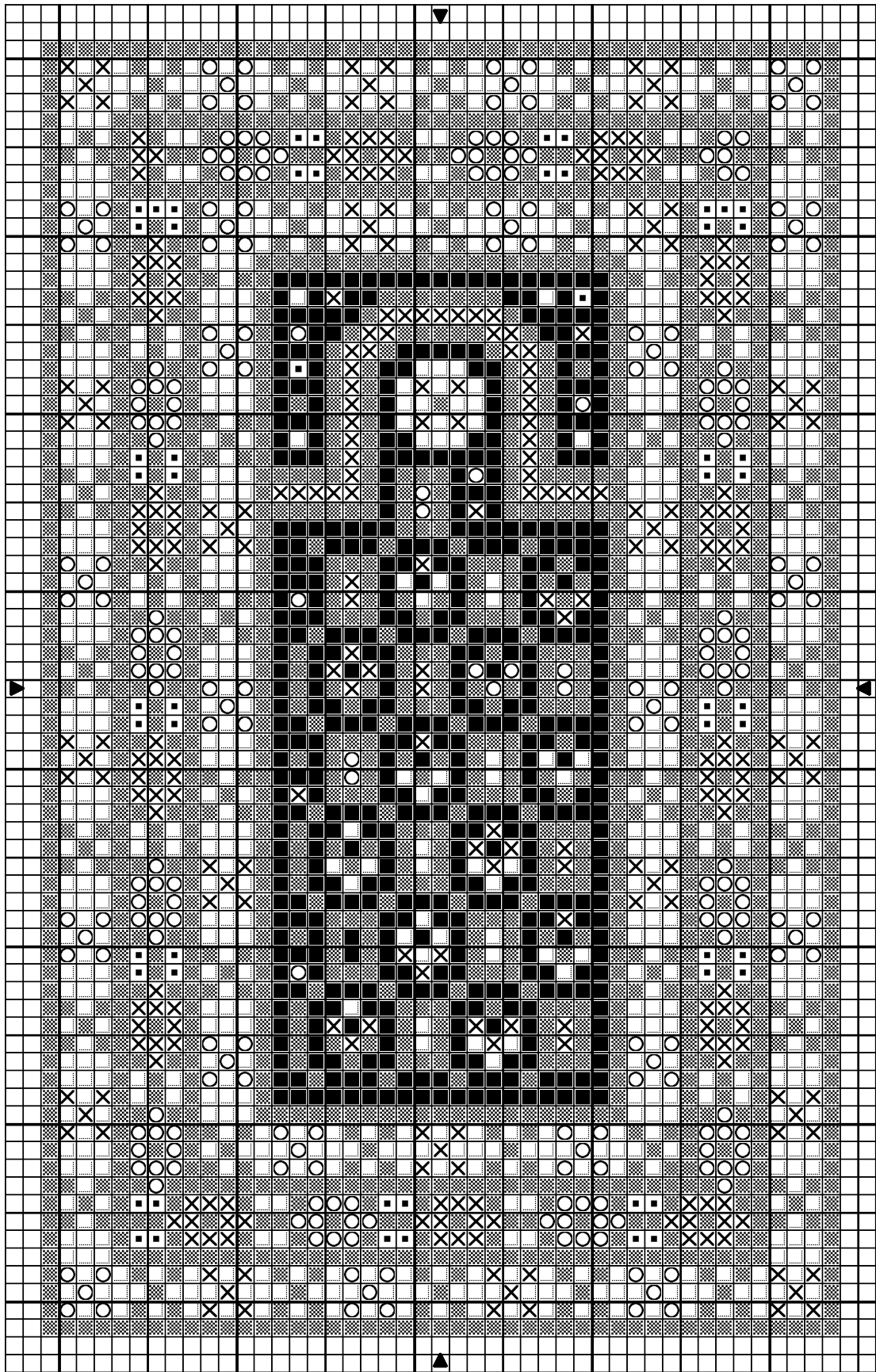


1:48 scale Leshgi prayer rug, circa 1850



Design By: Anna-Carin Betzén, www.btz.se/minis

Copyright © Anna-Carin Betzén

1:48 scale Leshgi prayer rug, circa 1850

		DMC
■	Dark navy blue	939
○	Blue grey	931
X	Pond green	501
■	Honey gold	729
■	Ochre copper	920
.....	Dune cream	739

Stitch Count 45 x 73

Design Area 1 x 1 1/2 inches at 48ct

7/8 x 1 3/8 inches at 54ct

Note: 54 count will give the most correctly scaled rug.

Cut an embroidery frame from sturdy card, with an aperture at least 1.5 cm (5/8") larger than the finished size of the rug. Cut gauze at least 1.2 cm (1/2") larger than the hole in the frame. Glue gauze to frame with Tacky Glue or similar.

Stitch with a single strand of floss. I suggest you locate the centre of the gauze and start with the design in the central field. Then stitch the niche, and finally the borders one by one from the inside out.

When finished, add a fringe if you like; you'll find instructions for it on my website.

Finally, apply Tacky Glue or similar to the last few rows of stitching on the back of the rug, around all edges. Work it in a little with a small, firm, paintbrush, and make sure that it covers the stitches closest to the edges too.

When dry, peel the gauze from the frame (I use to save the frames and reuse). Using sharp scissors, trim the fringed ends to a suitable length and cut along the very edges of the stitching on the other sides.

Design By: Anna-Carin Betzén, www.btz.se/minis

Copyright © By: Anna-Carin Betzén