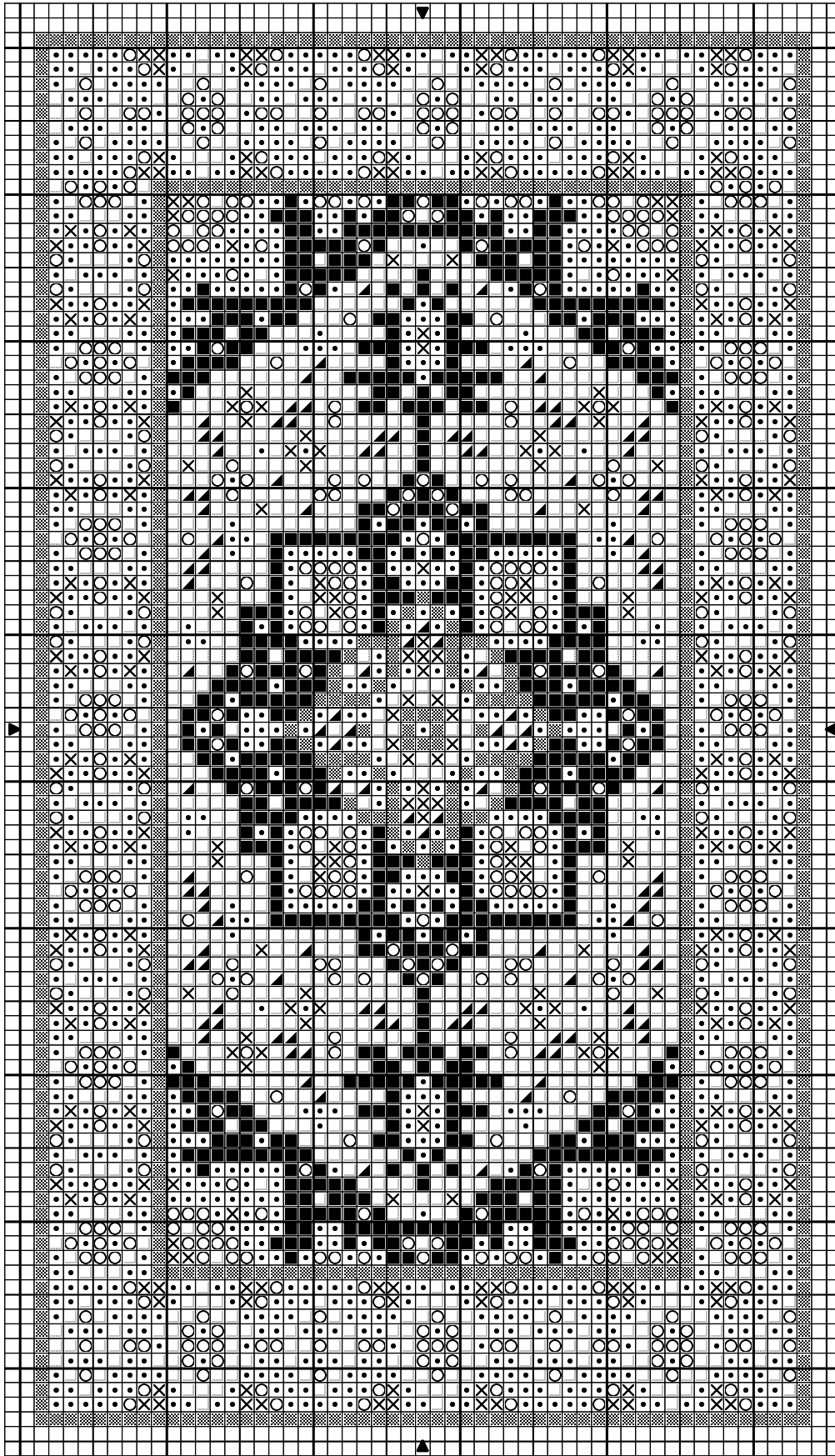









1:48 scale oriental rug: Heriz, circa 1880



Design By: Anna-Carin Betzén, www.btz.se/minis

Copyright © Anna-Carin Betzén 2005

1:48 scale oriental rug: Heriz, circa 1880

		DMC
	Blue grey	931
	Tarragon green	471
	Medium terracotta	356
	Ecru	Ecru
	Mahogany	300
	Brown red	355
	Black	310

Stitch Count 53 x 95

Design Area 1 3/8 x 2 3/8 inches at 40ct

1 1/8 x 2 inches at 48ct

1 x 1 3/4 inches at 54ct

Note: Cut an embroidery frame from sturdy card, with an aperture at least 1.5 cm (5/8") larger than the finished size of the rug. Cut gauze at least 1.2 cm (1/2") larger than the hole in the frame. Glue gauze to frame with Tacky Glue or similar.

Stitch with a single strand of floss. I suggest you locate the centre of the gauze and start with the medallion and the two palmettes sticking out from it, working from the center and out. Then work the brown rectangle (inner edge of the border) and add the corner motifs etc. Fill in the ground and then stitch with the border design.

When finished, add a fringe if you like; you'll find instructions for it on my website.

Finally, apply Tacky Glue or similar to the last few rows of stitching on the back of the rug, around all edges. Work it in a little with a small, firm, paintbrush, and make sure that it covers the stitches closest to the edges too.

When dry, peel the gauze from the frame (I use to save the frames and reuse). Using sharp scissors, trim the fringed ends to a suitable length and cut along the very edges of the stitching on the other sides.

Design By: Anna-Carin Betzén, www.btz.se/minis

Copyright © By: Anna-Carin Betzén 2005