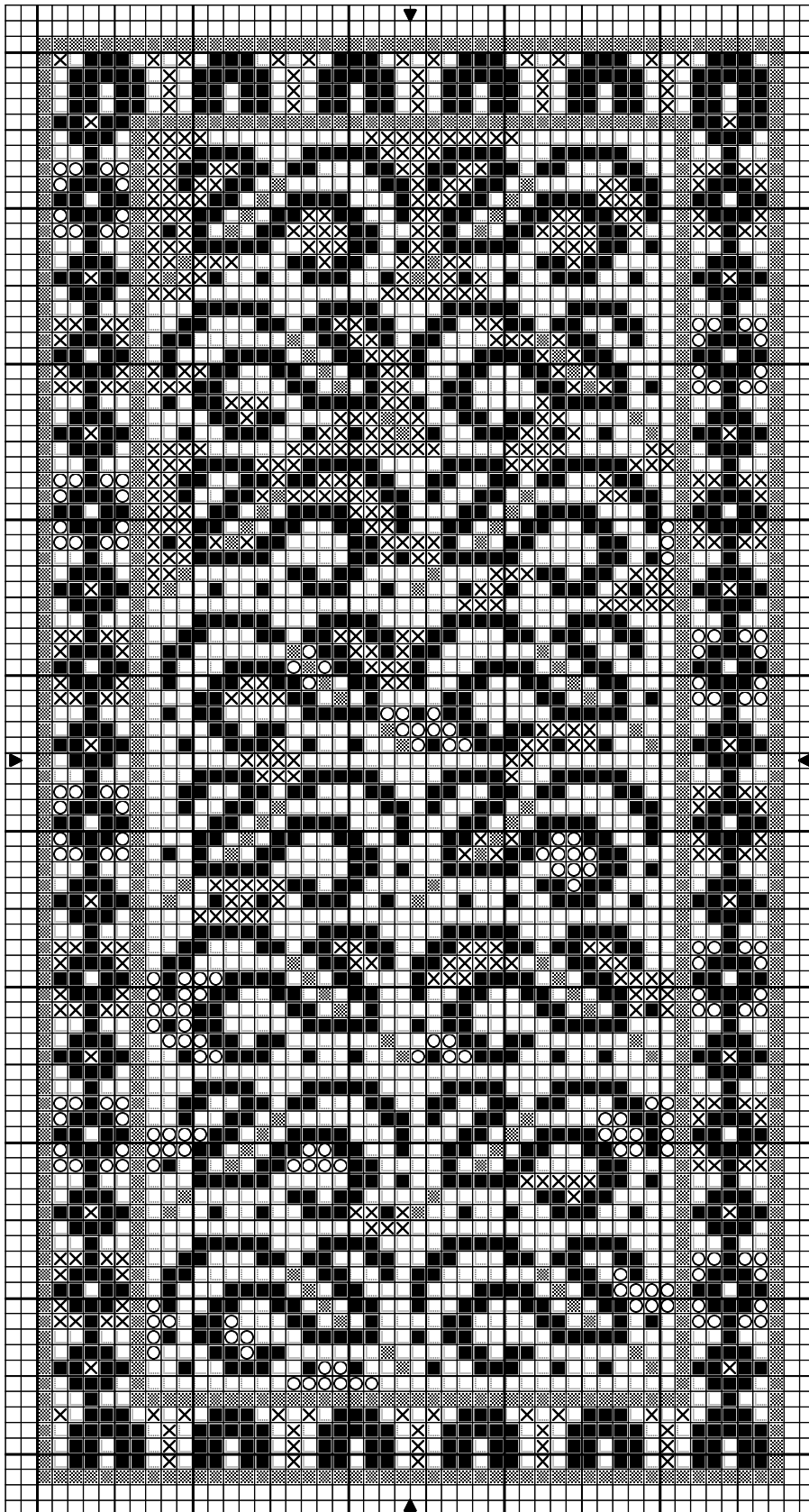


1:48 scale Beshir rug, mid-19th century



Design By: Anna-Carin Betzén, [www.btz.se/minis](http://www.btz.se/minis)

Copyright © Anna-Carin Betzén

1:48 scale Beshir rug, mid-19th century

		DMC
■	Ochre copper	920
□	Deep petrol blue	3750
X	Medium teal green	3848
○	Ochre brown	3829
■	Camel	437

Stitch Count 48 x 93

Design Area 2 1/8 x 4 1/4 inches at 22ct

1 1/2 x 2 7/8 inches at 32ct

1 1/4 x 2 3/8 inches at 40ct

1 x 2 inches at 48ct

7/8 x 1 3/4 inches at 54ct

Note: Mid-19th century rug from the Turkmen tribe Beshir. The repeated design in the field is likely a stylized flower.

When stitched on 48 count gauze, the size is exactly 1:48 scale.

Cut an embroidery frame from sturdy card, with an aperture at least 2 cm (3/4") larger than the finished size of the rug. Cut gauze at least 1.2 cm (1/2") larger than the hole in the frame. Glue gauze to frame with Tacky Glue or similar.

After completing the needlepoint, add a fringe if you like. You'll find fringing instructions on my website. The full-size rug had tabby weave ends in blue and red - check out the tabby weave instructions on my site's fringing page.

Finally, apply Tacky Glue or similar to the last few rows of stitching on the back of the rug, around all edges. Work it in a little with a small, firm, paintbrush, and make sure that it covers the stitches closest to the edges too.

When dry, peel the gauze from the frame (I save the frames and reuse). Using sharp scissors, cut along the very edges of the stitching.

Design By: Anna-Carin Betzén, [www.btz.se/minis](http://www.btz.se/minis)

Copyright © By: Anna-Carin Betzén