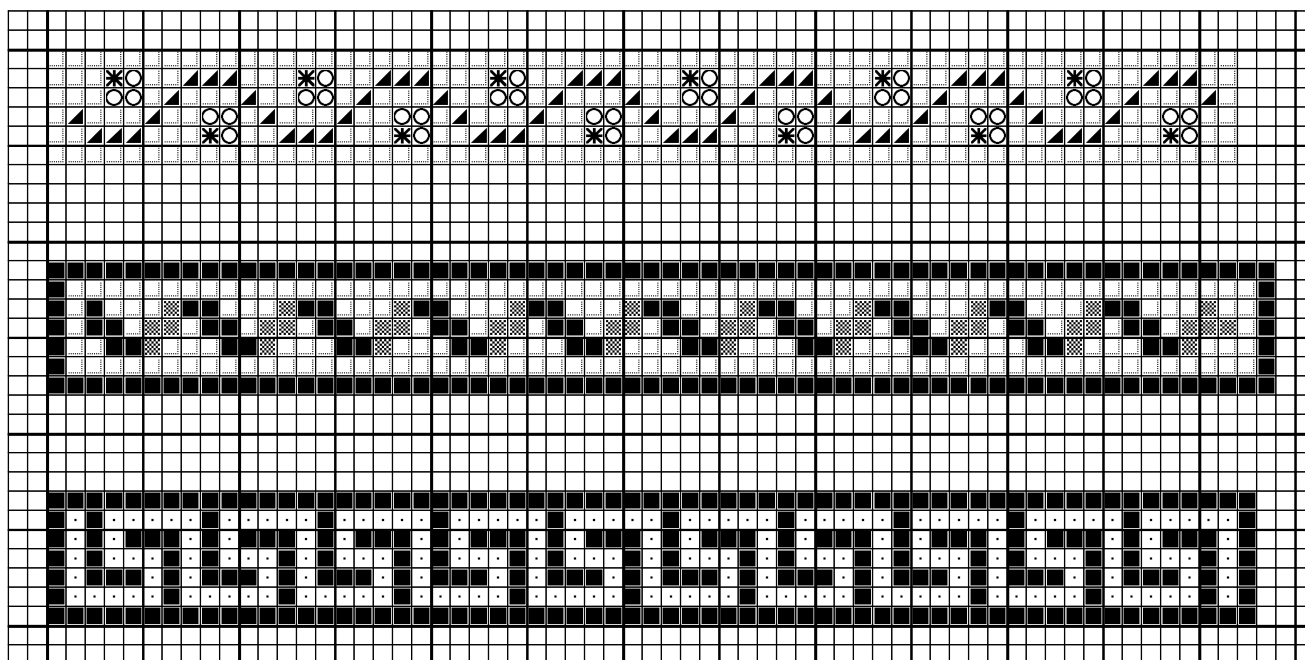


## Bell pulls with repeating designs



	Rosebush pink	DMC 3722
	Antique rose	152
	Silver green	3052
	Ecru	Ecru
	Light blue	813
	Medium sea blue	826
	Dark old gold	680

Note: These are great to stitch on the waste gauze around the edges of a larger needlepoint project. Or cut an embroidery frame from sturdy card, with an aperture at least 2 cm (3/4") larger than the finished size of the bell pull. Cut gauze at least 1.2 cm (1/2") larger than the hole in the frame. Glue gauze to frame with Tacky Glue or similar.

I used DMC floss on 48 count gauze. The shades of floss are just suggestions; do substitute your own color scheme. 54 count looks even better, if you have thread to go with it (DMC seems a little too thick).

Start at one end and stitch the bellpull to the desired length, adding or skipping repeats.

When finished, treat the back with glue. Cut out when dry. Bend brass wire to a 'U' shape and glue to the top back, or use a tiny metal finding. Make a tassel according to the how-to at my site, and glue to the lower end. Finish off the back with a piece of 2mm silk ribbon.

Design By: Anna-Carin Betzén, [www.btz.se/minis](http://www.btz.se/minis)

Copyright © By: Anna-Carin Betzén