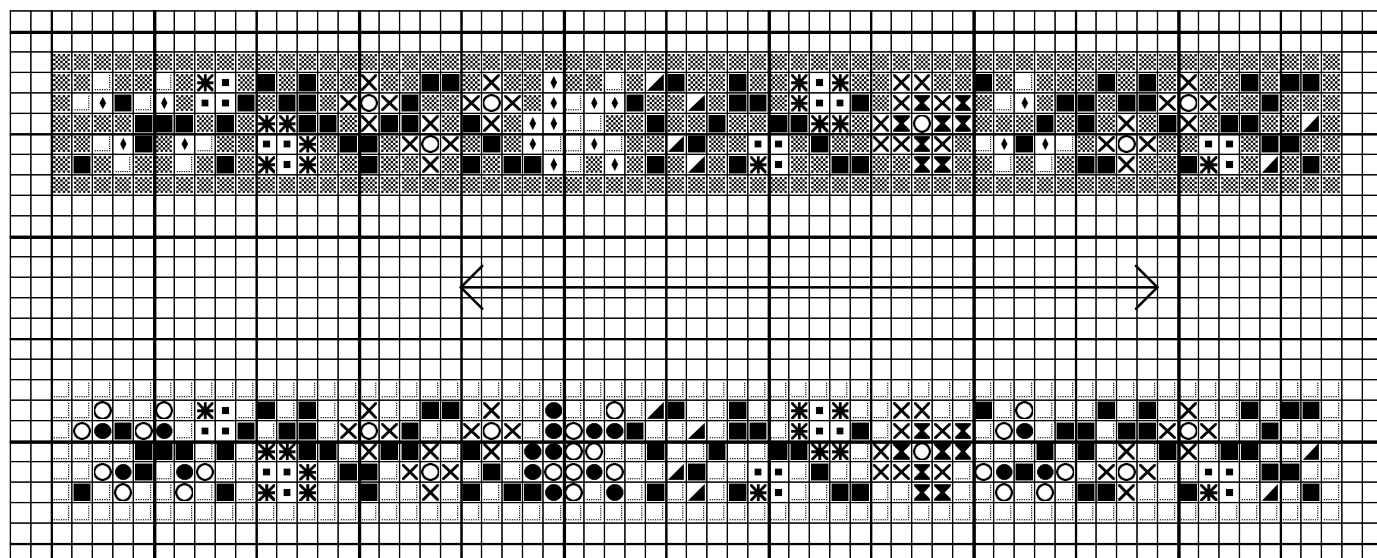


## Berlin wool work style bell pull in two colorways



○	Maze yellow	DMC 3820
●	Dark old gold	680
■	Antique rose	152
✱	Rosebush pink	3722
▲	Medium grape	3835
✕	Seagull blue	932
⊗	Blue grey	931
■	Bay leaf green	367
⋯	Ecru	Ecru
◆	Sahara cream	738
▒	Cherry red	815

Note: These are great to stitch on the waste gauze around the edges of a larger needlepoint project. Or cut an embroidery frame from sturdy card, with an aperture at least 2 cm (3/4") larger than the finished size of the bell pull. Cut gauze at least 1.2 cm (1/2") larger than the hole in the frame. Glue gauze to frame with Tacky Glue or similar.

This design will take on a very different look just from replacing the red ground with any dark color (black, navy, brown, etc). Note that neither colorway uses all shades listed. On ecru ground, you won't need Sahara cream and Cherry red; on red ground you won't need Dark old gold.

I used DMC floss on 48 count gauze. The shades of floss are just suggestions; do substitute your own color scheme. 54 count looks even better, if you have thread to go with it (DMC seems a little too thick).

Start at one end and stitch the bellpull to the desired length; to lengthen it you can e.g. stitch the section marked with arrows more than once, ending where you see fit.

When finished, treat the back with glue. Cut out when dry. Bend brass wire to a 'U' shape and glue to the top back, or use a tiny metal finding. Make a tassel according to the how-to at my site, and glue to the lower end. Finish off the back with a piece of 2mm silk ribbon.

Design By: Anna-Carin Betzén, [www.btz.se/minis](http://www.btz.se/minis)

Copyright © By: Anna-Carin Betzén