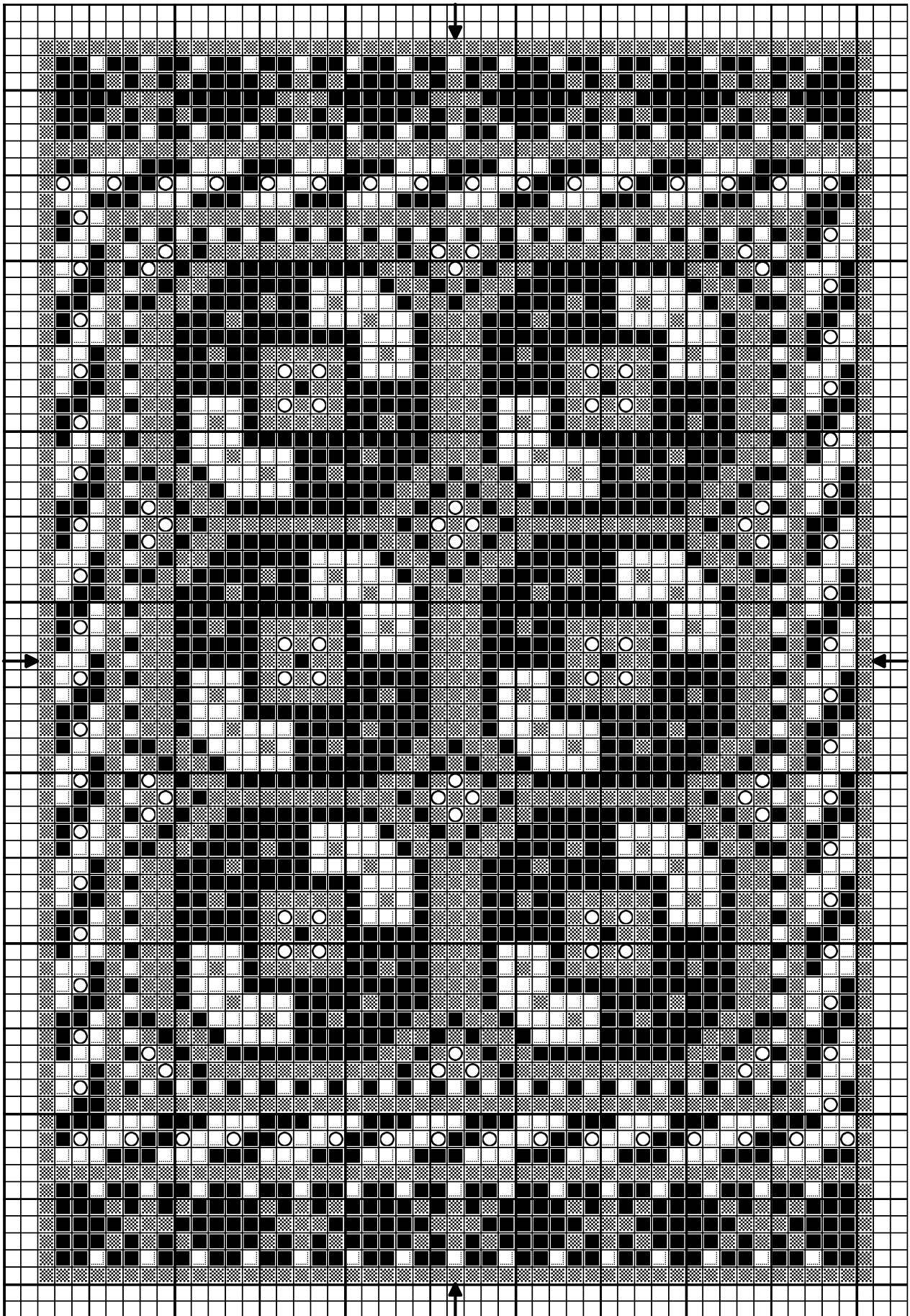



Afghan rug, circa 1900



Design By: Anna-Carin Betzén, www.btz.se/minis

Copyright © Anna-Carin Betzén

Afghan rug, circa 1900

		DMC
	Medium terracotta	356
	Dark red	498
	Dune cream	739
	Ebony	3371

Stitch Count 49 x 73

Design Area 1 1/4 x 1 7/8 inches at 40ct

1 x 1 1/2 inches at 48ct

7/8 x 1 3/8 inches at 54ct

Note: Afghan rug design based on a circa 1900 antique rug.

Cut an embroidery frame from sturdy card, with an aperture at least 2 cm (3/4") larger than the finished size of the rug. Cut gauze at least 1.2 cm (1/2") larger than the hole in the frame. Glue gauze to frame with Tacky Glue or similar.

After completing the needlepoint, add a fringe if you like. You'll find fringing instructions on my website.

Finally, apply Tacky Glue or similar to the last few rows of stitching on the back of the rug, around all edges. Work it in a little with a small, firm, paintbrush, and make sure that it covers the stitches closest to the edges too.

When dry, peel the gauze from the frame (I save the frames and reuse). Using sharp scissors, cut along the very edges of the stitching.

Design By: Anna-Carin Betzén, www.btz.se/minis

Copyright © By: Anna-Carin Betzén