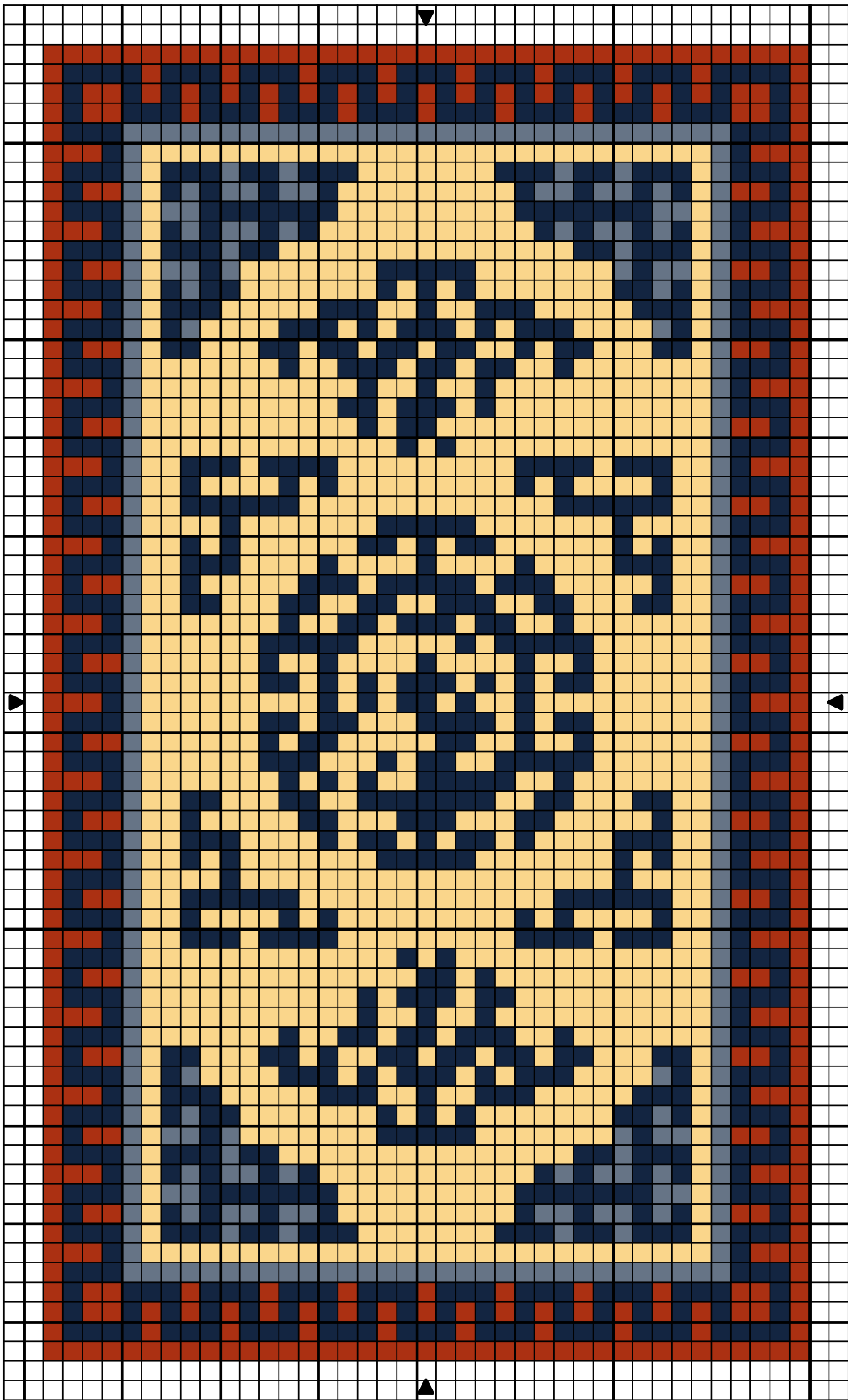


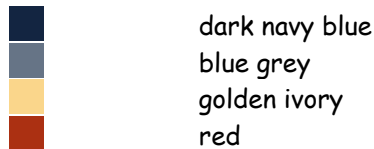
1:144 scale Chinese rug: dragon design, circa 1700



Design By: Anna-Carin Betzén, www.btz.se/minis

Copyright © Anna-Carin Betzén

1:144 scale Chinese rug: dragon design, circa 1700



Stitch Count 39 x 67

Design Area 7/8 x 1 3/8 inches at 48ct

5/8 x 1 inches at 64ct

1/2 x 3/4 inches at 84ct

Note: Cut an embroidery frame from sturdy card, with an aperture at least 1.5 cm (5/8") larger than the finished size of the rug. Cut gauze at least 1.2 cm (1/2") larger than the hole in the frame. Glue gauze to frame with Tacky Glue or similar.

I suggest you locate the centre of the gauze, start with the center motif and then the smaller surrounding motifs. Fill the ground and stitch the border.

When finished, add a fringe if you like; you'll find instructions for it on my website.

Finally, apply Tacky Glue or similar to the last few rows of stitching on the back of the rug, around all edges. Work it in a little with a small, firm, paintbrush, and make sure that it covers the stitches closest to the edges too.

When dry, peel the gauze from the frame (I use to save the frames and reuse). Using sharp scissors, trim the fringed ends to a suitable length and cut along the very edges of the stitching on the other sides.

Design By: Anna-Carin Betzén, www.btz.se/minis

Copyright © By: Anna-Carin Betzén