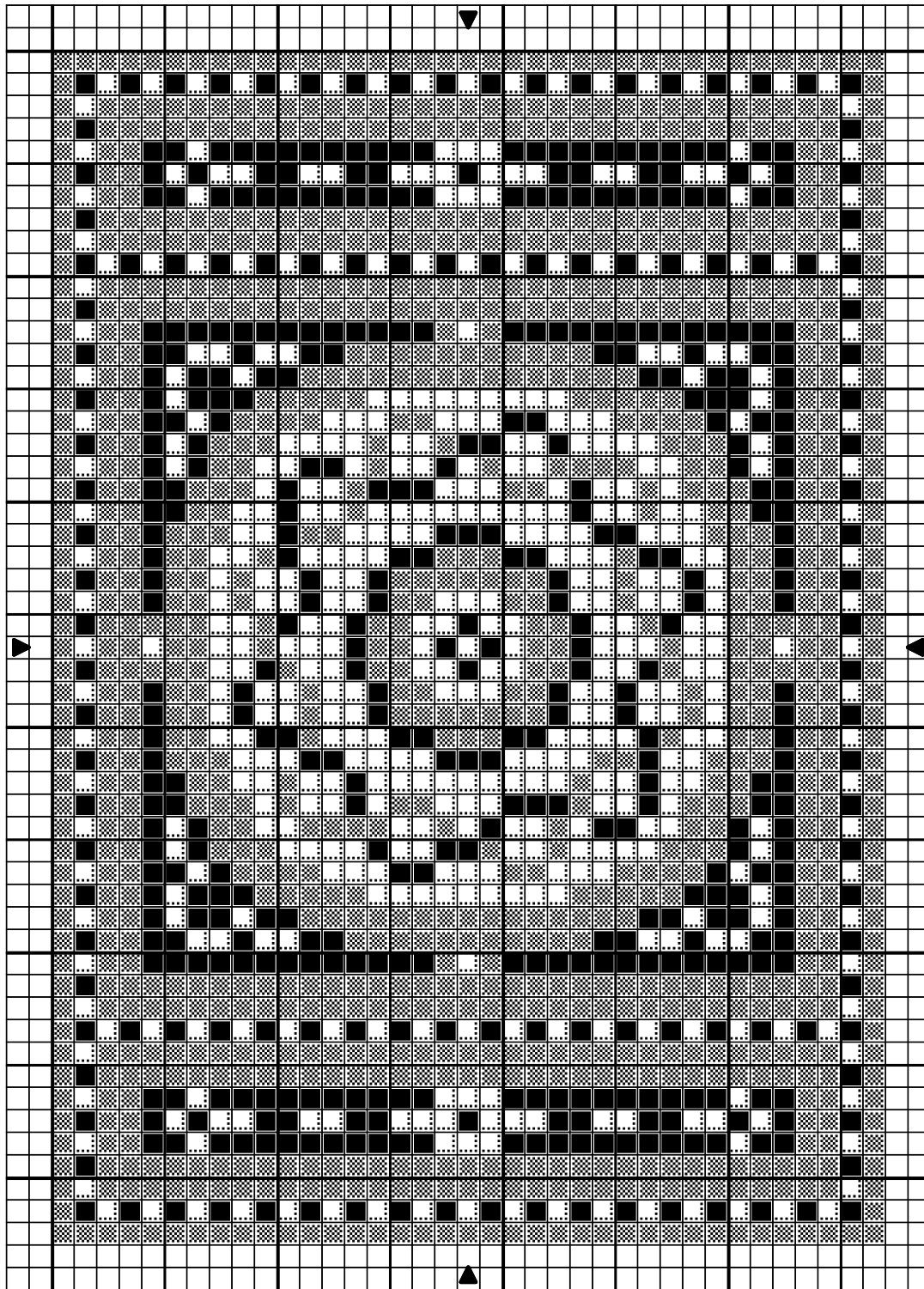



1:144 scale European rug: Axminster, circa 1780



Design By: Anna-Carin Betzén, www.btz.se/minis

Copyright © Anna-Carin Betzén

1:144 scale European rug: Axminster, circa 1780

	Sand gold	DMC 677
	Honey gold	729
	Dark green bronze	829

Stitch Count 37 x 53

Design Area 3/4 x 1 1/8 inches at 48ct

5/8 x 7/8 inches at 64ct

1/2 x 5/8 inches at 84ct

Note: Cut an embroidery frame from sturdy card, with an aperture at least 1.5 cm (5/8") larger than the finished size of the rug. Cut gauze at least 1.2 cm (1/2") larger than the hole in the frame. Glue gauze to frame with Tacky Glue or similar.

I suggest you start with the center circle and garland, then work the surrounding circle and fill in the background. Work the surrounding borders before you fill in the fields.

This type of rug would probably not have a fringe. Apply Tacky Glue or similar to the last few rows of stitching on the back of the rug, around all edges. Work it in a little with a small, firm, paintbrush, and make sure that it covers the stitches closest to the edges too.

When dry, peel the gauze from the frame (I use to save the frames and reuse). Using sharp scissors, cut along the very edges of the stitching.

Design By: Anna-Carin Betzén, www.btz.se/minis

Copyright © By: Anna-Carin Betzén